

400 FLY

CLASS LEADER

The 400 FLY makes a bold mark by introducing the acclaimed Beach Mode to the 40-foot flybridge realm, a standout feature in its segment. Reflecting Galeon's fourth-generation design principles, it showcases expansive windows, sleek contours, and a modular interior focus. Across its three decks, it exudes a sporty silhouette and captivating aesthetics.

The flybridge commands attention, boasting an L-shaped seating and dining arrangement, accompanied by a double helm sport seat and a compact wet bar. An optional bimini top provides respite from the sun. Forward, an expansive sundeck with an innovative front seat adds an exhilarating dimension.

The Beach Mode, a highlight, dramatically expands the cockpit through drop-down sides, setting a new standard in space. The saloon transforms with sliding dividing doors, unveiling an inviting dinette. The versatile two-way backrest and pivoting double bench foster a seamless connection between the saloon and cockpit.

A hydraulic platform aft hosts al fresco relaxation, optionally accompanied by a transom bar featuring a grill, chopping board, sink, and drained cooler. Dual fold-out tables encourage open-air dining, accompanied by ample seating and shelter.

On the main deck, a harmonious C-shaped dinette and entertainment area coexist with the galley and helm at the fore. The kitchen's upper window slides for enhanced interior ventilation. Convenient sliding starboard doors facilitate mooring maneuvers.

Below, two guest cabins with private bathrooms ensure comfort for four. The midship master cabin features a vanity station and generous double bed. The bow VIP cabin accommodates with twin V-shaped beds.

Elevating on-deck functionality, refined finishes, and comprehensive design and performance, the 400 FLY triumphs as an unrivaled presence in its domain.

FLYBRIDGE LINE

The 400 sets a new benchmark with its innovative dual-sided Beach Mode, elevating cockpit space. A captivating design and impressive performance firmly establish its leadership in the segment.





400 FLY

The 400 FLY stands out by showcasing a sporty silhouette and captivating aesthetics across its three decks



Seaworthy performance —



Notice the abundance of windows brightening the interior —

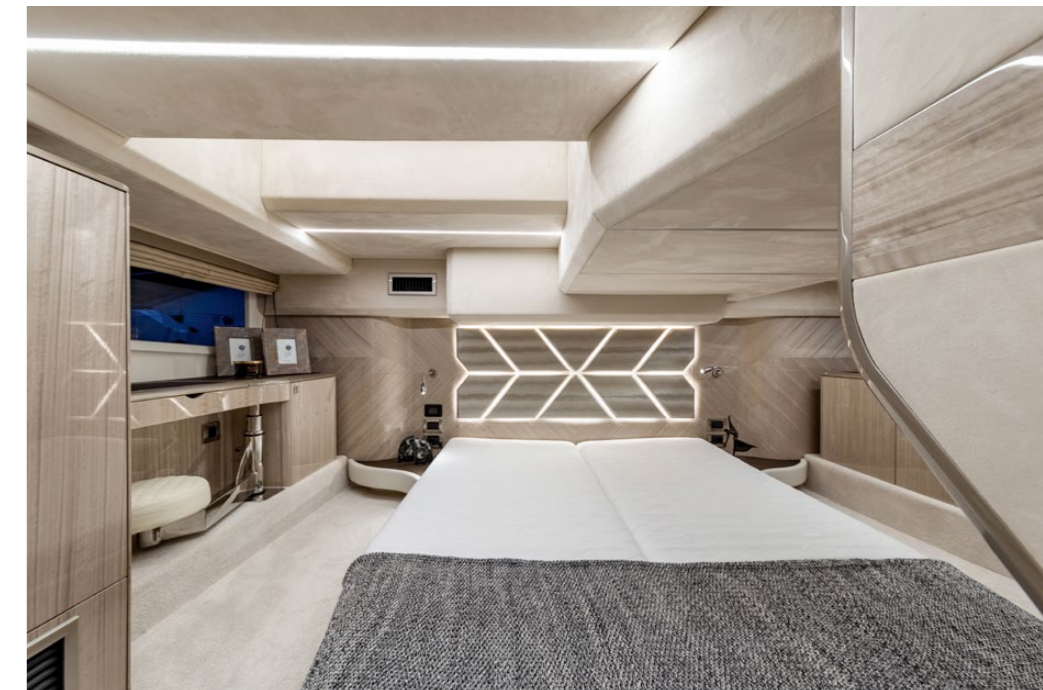


EUCALYPTUS HIGH GLOSS
Spacious saloon with a dining and rest areas

400 FLY



The galley is moved forward



Owner's cabin with a double bed for extra comfort



VIP cabin with a slidable bed



Two bathrooms provide extra privacy for the guests



— The optional soft bimini protects from the harsh sun



— Engage Beach Mode to extend usable cockpit area



— Top helm station gives total command of the yacht

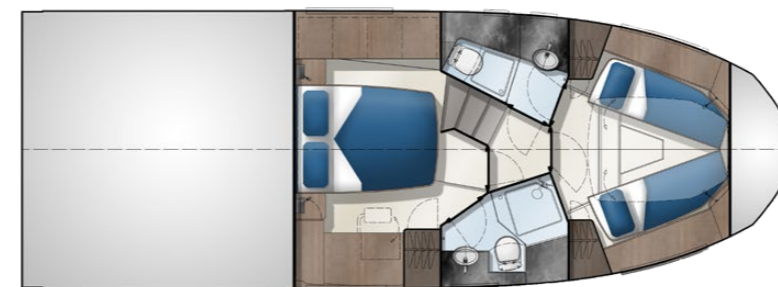
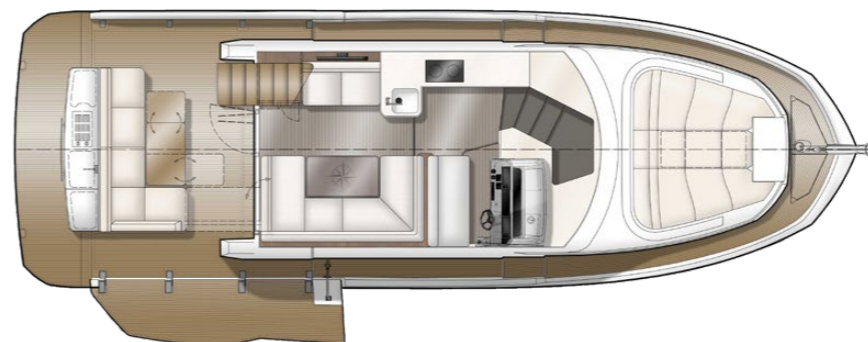
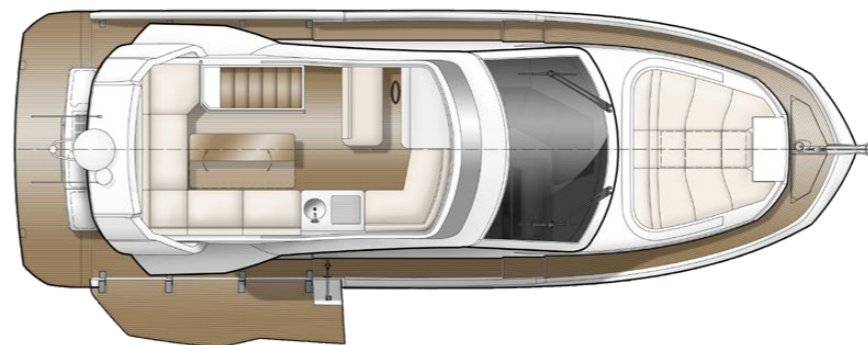


— Generously sized flybridge

400 FLY

CLASS LEADER

LAYOUTS



TECHNICAL SPECIFICATION

Length of the hull	[m]	11,08
Length overall	[m]	12,48
Beam of the hull	[m]	3,94
Beam overall	[m]	3,95
Draft max ₁	[m]	0,90
Bridge clearance ₂	[m]	4,70
Height to transport	[m]	4,41
Fuel tank capacity	[dm ³]	2 x 500
Water tank capacity	[dm ³]	450
Grey water tank	[dm ³]	160
Black water tank	[dm ³]	130
Mass of Light Craft Condition ₃	[kg]	11785
Maximum Load	[kg]	2870
Min. engine (-s) power	[kW/hp]	2x198/270
Max. engine (-s) power	[kW/hp]	2x324/440
Crew limit		12
Category		B

₁ - without propellers ₂ - Max. height from water line at draft min. ₃ - minimum mass with base engines

TECHNOLOGY

